

Interior Features

- Spacious 1 & 2 Bedroom Floor Plans
- 1 & 2 Car Garage*
- Fully-Equipped Kitchen Including:
 - GE Frost Free Refrigerator
 - GE Electric Range & Hood
 - Dishwashers*
 - Garbage Disposal
- Carpeted Bedrooms
- Electric Air & Heat
- Free Basic Cable
- Private Patio
- Pet Friendly**
- Washer / Dryer Connections (Duplex Units Only)



Exterior Amenities

- Senior Community Laundry
- Facility On-Site Maintenance-Free Living
- 24-Hour Emergency Maintenance
- Convenient to Major Thoroughfares
- Close to Parks, Shopping, Dining and Health Facilities
- Credit Card Payments Accepted

Wesparke Village I Senior Living Community is conveniently located with easy freeway access and just minutes from I-470 near shopping, entertainment and schools.

3500 SW Wesparke Lane
Topeka, Kansas 66614

Phone: (785) 861-7050
Fax: (785) 861-7052



*Westlake Housing communities
offer affordability and comfort!*

Senior Apartments

*Affordable Living in
Comfortable Surroundings*

Professionally Managed By:

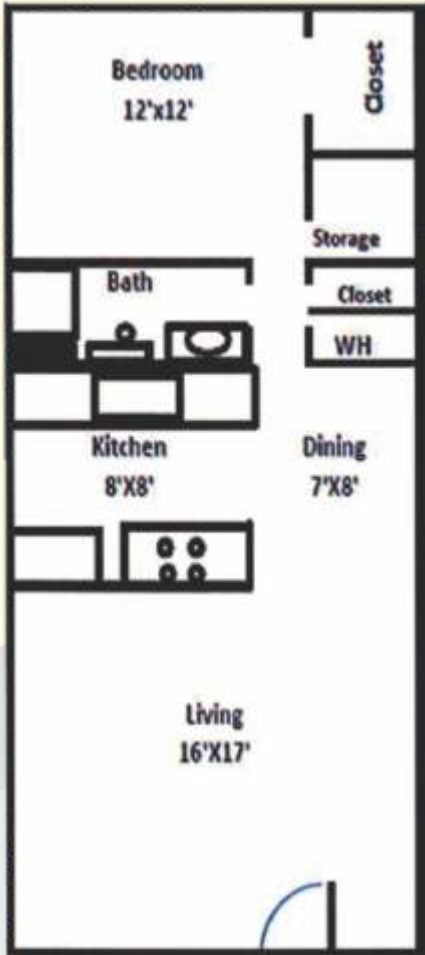


*In Select Units Only

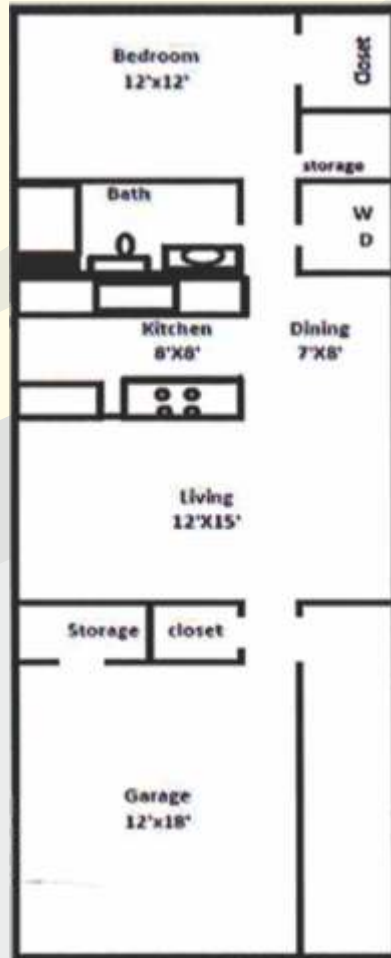
**Breed restrictions and fees apply

All information is subject to change without notice.

1 Bedroom / 1 Bath
576 Sq. Ft.*



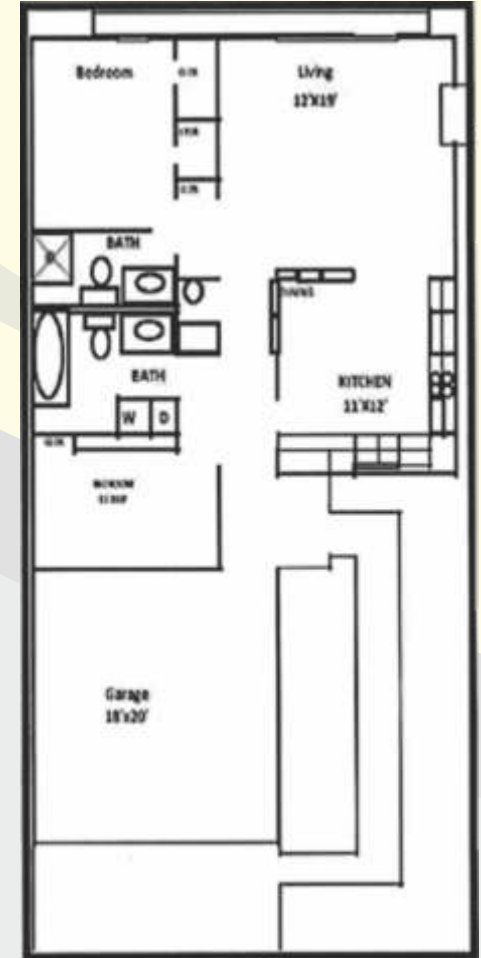
1 Bedroom / 1 Bath
600 Sq. Ft.*



2 Bedroom / 1 Bath
744 Sq. Ft.*



2 Bedroom / 2 Bath
994 Sq. Ft.*



Our Mission is to provide high-quality affordable housing for our residents.

Phone: (785) 861-7050

*All square footage is approximate